



Northwest Designer Craftsmen

www.nwdc-online.org

Facebook: <https://www.facebook.com/pages/Northwest-Designer-Craftsmen-NWDC/355877767779930?sk=wall>

NWDC online calendar: <http://www.nwdc-online.org/calendar/>

Members' Only Site: <https://sites.google.com/site/nwdesignercraftsmen>

Meetings and Speakers



Phinney Neighborhood Center Program:

2nd Wed. of the month

Board meetings 5:30-7 (open to everyone)

Speaker 7-8 pm / Social Time 8-9 pm

Phinney Neighborhood Center location:

6532 Phinney Ave N, Seattle, WA 98103, in the lower (east) building basement

Sept 9 Julie Conway

Oct 14 Cynthia Toops

Julie Conway is the NWDC September Speaker

Julie will be talking about her career as a glass blower, her journey working with international glass masters and how she trained, as well. She will discuss her process and how she got into design commissions. Most of her work is custom ordered and she is now collaborating on large scale projects with businesses such as the Marriott and Four Seasons Hotels. In addition, she will be talking about her work as a leader in the green community as the founder of www.BioGlass.org/, a group of artists working on finding solutions to eco-efficient glassmaking techniques.

Her website is www.Illuminataglass.com/



Julie working with her team

A bit of NWDC history:

The year was 2009, and NWDC was in danger of disbanding. Our President Nan Goss organized a “think tank” with Miriam Works/Consultant for all interested members to attend. It was held in a swank conference room in City Center Tower, thanks to connections with Facere Jewelry on the main floor. The 20+ members who attended decided that the group was worth continuing. Megan Corwin volunteered to become President, with Carol Milne as Vice President. Loren Lukens stepped up as Treasurer and Katherine Holzknecht as co-secretary with Patti King. Under Megan’s strong leadership that board changed the new member jurying to an online process, updated the By-laws and Standing Rules, created the website and Google page, and sent historical items to the Archives at the University of Washington. A monthly online digital newsletter was created by Candyce Anderson.

NWDC survived, reinvented itself and continued as a premier artist group. With Lois Harbaugh as President, NWDC celebrated its 60th anniversary with a show at Whatcom Museum, published a catalog, honored Lifetime Achievement Recipients, ushered in on-line applications for exhibitions, established a social media presence, created a new website, maintained the jazzy newsletter, and secured an upscale corporate venue for 2 consecutive exhibitions, plus exhibits in Washington and Oregon. NWDC is thriving and should continue!

The basic fact was revealed at our think tank session; NWDC needs a President, Vice President, Secretary and Treasurer to survive because of our 501C3 non-profit status and the way our group is organized as a volunteer art group.

So we have survived and prospered for 6 more years, but find ourselves in a crisis of leadership again. We need to have members volunteer to be President, Vice President and Treasurer before 2016. If you have been enjoying the benefits of membership- exhibits, parties and so forth- now it is your turn to step up and help run the organization. It is really not fair to expect the people who saved the group from collapse to continue in their positions for life!

~Katherine Holzknecht

To volunteer for any of these positions, contact Lin McJunkin (lin@mcjunkinglass.com or 360-941-6742) or the Board member of your choice. See the last page for a list of current board members and their contact numbers.

Read About Volunteer Jobs

If you want to know more about what is involved in a volunteer position, check the Volunteer Job Descriptions page on NWDC’s Google site. Go to <https://sites.google.com/site/nwdcdesignercraftsmen>. We are still building the section but it is coming along. You will find valuable information there about how NWDC keeps serving you and how you can help.

Help Needed!

We need an honest, responsible NWDC member from the greater Seattle area to volunteer as Treasurer. You will be able to work on a new dedicated laptop computer with the accounting already set up in Quickbooks. If you can balance a checking account, you can do this job. Quickbooks training will be provided, and the current Treasurers could be mentors and/or advisers.

This job could be shared with your spouse or significant other, or an adult child that needs intern experience. You could bring in the team that you want to work with, including non-members. This is a great opportunity to learn about and manage the financial side of our art organization. For more information, or to volunteer please contact:

Loren Lukens loren.d.lukens@gmail.com or
Katherine Holzknacht khartiste@hotmail.com

Can you volunteer to serve on the ad hoc Search Committee for Board Officers?

The search is on! As outlined in Katherine Holzknacht's letter above, our current President, Vice President and Treasurer are leaving their posts at the end of this year. We are forming a Search Committee to identify candidates for these crucial positions. Without new board members, NWDC cannot continue to function under our own By-laws or those of our 501.c.3 non-profit IRS provisions. Please contact Lin McJunkin by September 15 (lin@mcjunkinglass.com or 360-941-6742) to be part of this short but vital process during the month of October that will ensure the continuance of NWDC.

Thank you and long live NWDC!

October is New Member Application Month

We continue our search for new members who are actively creating new and compelling work, with a broad and recent exhibition history and connections to other art organizations. Your discerning "invitations" will help uphold the high quality of work our group represents.

October is our annual on-line New Member Application month. Please encourage artists you know whose work meets our criteria for membership to apply online at www.nwdc-online.org from October 1 - 25. In the menu at the left, they can click on the "How to Join" button for everything they need to do for "Membership Application." Directions for voting online will be sent to all members prior to the November balloting.

-Lin McJunkin, NWDC Membership Chair

President's Letter

Being on the board and being President leaves one dazzled about how the future opens up. Frankly, I expected to coast in my "extra" year of being president. It's been anything but that.

At the beginning of the year, we did not know that by late summer we'd have two exhibits scheduled for the South Lake Union tech sector of Seattle. This is, for me, a dream fulfilled. I've long wanted a corporate show site for NWDC. Thank you Gale Lurie for having the generative conversations with Peggy Weiss (art manager for UW Medical Buildings.) Now, at this writing, wonderful entries are coming in from the membership to an on-line jurying site at NWDC's new web address.

Thank you to Larry Metcalf for stepping forward to jury the SLU exhibit. Everyone is so pleased. Once again, Mr Metcalf makes the marvelous blossom for NWDC.

That new web site was just a hunch last spring. An exploratory web committee of Brian O'Neill, Jan Koutsky, Eva Funderburgh, myself, and Nia Michaels met at Nia's place. Eva Funderburgh thought she might possibly be the point person for designing the site. And now she's bringing a new site into being! Soon all members will have the chance to send in fresh imagery for their own personal page on NWdesignercraftsmen.org.

Thank you to Joyce Hayes for pinch-hitting for Exhibitions during an absence by Gale Lurie -- who knew we'd end up installing an on-line jurying system?

At the beginning of the year, we did not know that we'd start a second Facebook page; a group page for members only so we can share amongst ourselves. But Nia Michaels and others pressed for it-- and voila! People are rapidly signing up. I think it's going to be a hit.

Meanwhile, our business NWDC Facebook page, with TLC from the Hurleys and Julie Conway, has leapt forward with almost 500 friends. Keep posting to this site. It's our face to the world.

As for the Summer Social, it's always a challenge to find a site. Ron Pascho told me that Joan Hammond had a really nice house -- but I was unprepared for how soul-nourishing her place would be. I enjoyed every minute I got to be out there with Joan and Terry Siebert, our new hospitality chair. What a perfect site for honoring the Founding Director Emeritus of the Renwick Gallery, Lloyd Herman, of course.

Thanks to Lynn DiNino and Brian O'Neill for the many hours required to, respectively, conduct, transcribe, and edit Lloyd's interview and then to get it on to our two websites. This was the long work of making the award a reality. Thank you!

And finally, I knew Michael Monroe to be a good speaker, but I had no idea how thoroughly moved I and others would be by his account of Lloyd's visionary ideas and their ripple effect. Bravo to all the speakers who expressed appreciation for Lloyd. I hope it was wonderful for Lloyd. It was good for NWDC -- reminding us of who we have been and who we can be.

What's ahead? Getting the SLU first exhibit up and open (with whatever that entails), selecting new members, in addition to the discovery of our next board. Of course, It seems daunting. But how unforeseen this whole year has been to date. Coasting didn't happen. Innovation opened up. It came from who our members are. I am grateful.

Save the Date for this joint project of NWDC, University of Washington

School of Art+ Art History+Design, and BAM.



An Evening with Kay Sekimachi

Friday, October 2, 8 – 9:30

Kay Sekimachi and Bob Stocksdale are monumental figures of the American Craft movement. Fueled by the desire to challenge their mediums and techniques, Sekimachi and Stocksdale's work is a testament to their constant commitment to engage wholeheartedly with materials and processes. Kay Sekimachi is a living national treasure. She has made things of beauty that will remain forever in the annals of craft history. Northwest Designer Craftsmen, University of Washington School of Art + Art History + Design, and Bellevue Arts Museum invite you to share an evening in Kay's honor.

Small bites and cash bar.

By invitation only. Please RSVP to rsvp@bellevuearts.org with your and your guests' names by Monday, September 28.

Join us beforehand for a talk with Signe Mayfield, Curator of *In the Realm of Nature: Bob Stocksdale and Kay Sekimachi*, 7 – 8pm.

LOCATION & PARKING

Bellevue Arts Museum is located at 510 Bellevue Way NE, Bellevue, WA, 98004. Complimentary parking is available on two underground levels beneath the Museum.

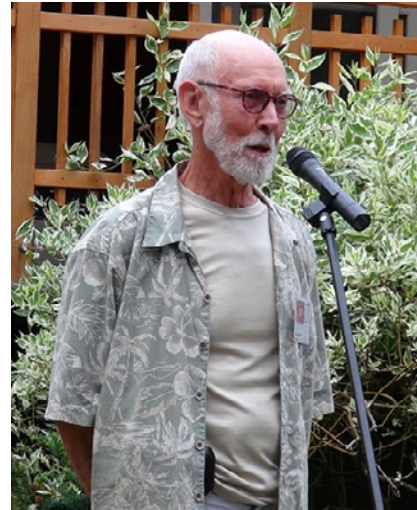
info@bellevuearts.org | 425.519.0770

Acknowledging a superb Summer Social and the people who made it happen!

Thank you Joan Hammond and David Hayes! Your hosting of the Summer Social was a gift to NWDC! Your home is so beautiful, spacious, and serene. We loved being there! It was the perfect place to continue our NWDC-fabulous-party tradition and to celebrate 25+ years of contribution by our Honorary member, Lloyd Herman.



Lloyd Herman -- thank you for letting us go on & on about you! It's fun to know someone with your kind of resume: speaking about craft at the Vatican, receiving awards from European royalty, founding the national craft museum not only in this country, but also in Canada!...who else can we say these things about? It was our pleasure to express gratitude for your involvement in NWDC. We have been so pleased to have you in our midst and it was moving to hear about how bright ideas triumph and turn into life accomplishments.



Lloyd Herman and Present Lois Harbaugh with a very special cake.

Summer Social

Speakers: Lois Harbaugh, Joan Hammond, Michael Monroe, Larry Metcalf, Lynn Di Nino, Alida Latham, Carol Gouthro spoke for herself and read for Jill Clark, Lars Husby, Ron Ho, Ken Turner and Lloyd Herman twice. (Lois Harbaugh served as MC and Joan Hammond introduced Michael Monroe.) (Check out Ron Ho's wonderful necktie.)



Honorary Member and speaker, Michael Monroe, really brought it home; Lloyd Herman is a visionary. Lloyd's ideas rippled out, not only at the Renwick, but also at BAM through Michael's career and Stefano's. Larry Metcalf spoke to the power of having Lloyd's encouragement and friendship -- each NWDC speaker illustrated that point on the personal level. Thank you Lynn Di Nino, Alida Latham, Jill Clark, Carol Gouthro, Lars Husby and Ron Ho for singing Lloyd's praises so clearly and with such affection. You spoke for all of us. Nora Atkinson, the first person to be "The Lloyd Herman Curator of Craft at the Smithsonian," summed it up with a statement she e-mailed and we read at the event; "Even aside from all he has done for me in funding this position, he's one of the gentlest, most good-natured, encouraging and generous people I have ever met. The craft community in the Northwest is incredibly lucky to have him."

Ken Turner presented NWDC's commemorative gift to Lloyd. Ken was asked to "make something Lloyd could use everyday, that would make him think of NWDC, and would survive down-sizing." In response, Ken created an exquisite cup and saucer.





Behind the scenes, Lynn Di Nino is NWDC's Vasari; chronicling the lives of our distinguished contemporaries, first with the Living Treasures videos and now with her interviews. Thank you, Lynn. Your interview with Lloyd is an enduring part of this award. (Dilemma for the near future; when it's Lynn's turn, who will she talk to? We can't have her talking to herself...)

Brian O'Neill formatted the "Awards" page on NWDC-online.org and "Recognition" on NWdesignercraftsmen.org. It was a summer-spanning effort, but we now have our tribute to Larry and to Lloyd available to the world -- and the illustrated essays from NWDC's 50th & 60th Anniversary Catalogs are also now on-line.



Thank you to Terry Siebert, Hospitality chair. Terry bumped NWDC up a notch by supplying cloth tablecloths and real silverware plus flowers for the tables! Thanks Terry! Thanks to Joyce Hayes and her husband, Cecil, for extra hands and brain cells in the hours just before the guests arrived. Thanks to Ron Ho & Stewart Wong for going to the flower mart and creating two over-the-top arrangements. Thanks to bartender Don Myhre, slider servers Linda McFarland and Bobbi Goodboy, entree monitors Lynn Di Nino and Dick Weiss, Dessert wallahs Gale Lurie and Lin Holley. Volunteers rule!



Joyce and Cecil

Thank you NWDC spouses Tom Kuniholm (Terry Siebert) and Stan Haines (Carol Gouthro) for rescuing the whole party by directing parking when no-one else would.

Thank you to spouse Weston Nishimura (Lois Harbaugh) for discussing logistics, shopping for sound equipment, and photographing the event. Oh! and also providing the pulled pork sliders and making home-made cole slaw. Viva amazing spouses!



Thank you NWDC members & guests for coming, having great conversations, and bringing your fabulous potluck dishes! NWDC parties make NWDC NWDC!



Member News



How fabulous is this! New member Deb Schwartzkopf and her partner, George Rodriguez on the cover of American Craft! And with a great article by Julie Hanus and scrumptious photos by Robertsen Ashmen inside. If you're not already subscribing to American Craft (we recommend it!), the August/ September issue is most likely still available in bookstores. Or see the article on-line (links on following page).

Member News Continued

More on the American Craft article featuring
Deb Schwartzkopf and George Rodriguez

Let it Grow!

Writing By Julie K Hanus | Photos by Robertson Ashman, <http://robertsenashman.com/>
in American Craft, <http://craftcouncil.org/magazine/article/let-it-grow>, August 2015!
Eight page feature article: Magazine available in most major bookstores!



Member News Continued

Bellevue Art Museum

510 Bellevue Way NE, Bellevue, WA

Saturday & Sunday, September 26 & 27, 10am-5pm

Artist Workshop with Danielle Bodine: Paper Vessels and Tall Twined Baskets

Presented by Northwest Designer Craftsman

This two-day workshop will be an excellent opportunity for participants to experiment with a variety of materials to create unique paper vessels and baskets. In day one, participants will learn how to construct a vessel using basketry techniques and then apply thin sheets of paper to the surface of it. Printing, stamping, collaging, and painting applications will be explored. Vessels will then be further embellished and personalized.

In day two, participants will learn the ancient technique of twining to create contemporary baskets out of a variety of materials. Learn various twining techniques on 4-6 foot bamboo or willow spokes and experiment with a variety of natural and manufactured weaving materials. Collaging with mulberry papers, stamp printing, painting, using dyes, and embellishing will all be explored. Instructor will bring samples and books.

All supplies included. Contemporary basket makers and their work will be reviewed.

Recommended for beginners to advanced students, art teacher, and artists in all medias.

\$195/member, \$235/non-member. Register online by September 13: http://www.bellevuearts.org/calendar/event/09_26-27_artist_workshop_danielle_bodine.html



Day One: Paper Vessel



Day Two: Tall Twined Basket

Member News Continued

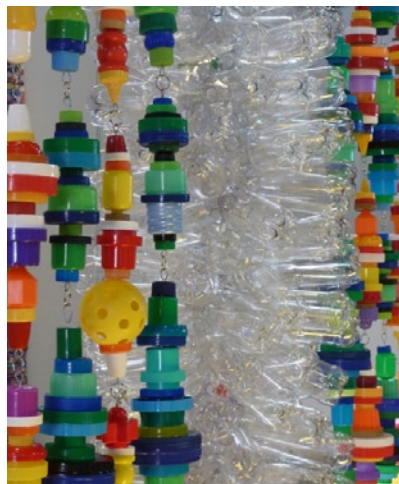
Barbara De Pirro is featured at the Anacortes Arts Festival

“Here are some images of my recent installations at this year’s invitational exhibit, Anacortes Arts Festival, as part of Arts at the Port. “*Flora, Flourish 1 & 2, Metamorphosis, Roots & Vines*, were all created using hundreds (into the thousands, in some cases) of reclaimed & re-invented plastic bottles, bags & caps. It was a wonderful experience with an incredibly supportive community!”

Flora



Flourish



Flourish



Flourish and Metamorphosis



Roots and Vines



Member News Continued

Helga Winter will be showing 2-D as well as 3-D work during her show, *Layered Conversations* at the Northwest Woodworkers Gallery, 2111 First Ave, Seattle (Belltown) during the months of July and August 2015.

Title: *Read Me Like A Book*

Materials: Reclaimed Books, Unpigmented and Pigmented
Beeswax, Thread

Dimensions: 14" high x 31" wide x 3" deep



Title: *Mosaic of Life*

Materials: Madrone with Dye and
Pigmented Beeswax

Dimensions: 4.25" high x 8" wide x
6.5" deep



Member News Continued

National Basketry Organization's Juried All Things Considered VIII Exhibition

NWDC members Dona Anderson, Danielle Bodine, Lanny Bergner, Katherine Lewis, C.A. Michel, and Judy Zugish have artwork in the National Basketry Organization's juried exhibition, All Things Considered VIII. The show will be traveling from The Grand Hand Gallery in St Paul, Minn. to the Fruitlands Museum in Harvard, Mass.

The show will open at Fruitlands Museum on September 18 and will run through November 22, 2015.

Fruitlands Museum <http://www.fruitlands.org>



Katherine Lewis' *Moon 2*

5.25"x20"x20" Willow



Danielle Bodine's, *Karnak goes to Harvard*

Karnak 51"H x 13"W x 9" Mulberry papers cast on coiled basket, painted, dyed, Antique wooden laundry stirrer, collar.

Photo credit, Michael Stadler

Losing You by Patricia Resseguie was selected Best of Show at the annual Anacortes Art Festival Arts at the Port. The selection was made by Stefano Catalani, Director of Art, Craft and Design at the Bellevue Art Museum. *Losing You* is about shattering, burning loss of any kind. It is a particular homage to the loss of our honeybees.



Member News Continued

Kathleen Probst Wins Emerging Artist Award at Quilt National

Kathleen Probst's piece, *Blue Veil*, was juried into Quilt National 2015. *Blue Veil* was the winner of the Cathy Rasmussen Emerging Artist Memorial award. Jurors for the show included NWDC member, Ann Johnston of Lake Oswego, OR, museum curator Judy Schwender of Paducah, KY and Rosalie Dace of Durban, South Africa.

The eclectic collection of never before exhibited works are from 84 talented fiber artists representing 33 states and 8 foreign countries. More than 6,000 visitors are expected from all over the world to see Quilt National '15. The biennial exhibition is located at the Dairy Barn Arts Center in Athens, Ohio. It will be up until Sept 7th and then the collection will be split into groups and travel for exhibition over a 2 year period.



Blue Veil

53 x 55 inches

Cotton, dye, cotton batting, embroidery thread.



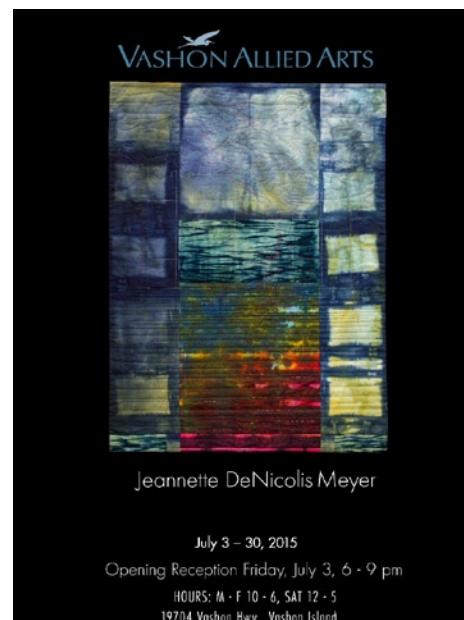
Kathleen Probst

Blue Veil is the first piece in Kathleen's H-series. See more of her H-series here:

http://kathleenprobst.com/?page_id=4588

Kathleen has written several blog posts about her first experience in Quilt National, some include more art from the exhibition, here: http://kathleenprobst.com/?page_id=2461

Jeannette DeNicolis Meyer's exhibit, *Keeping Time*, was on view at Vashon Allied Arts, 19704 Vashon Highway, Vashon Island, Washington through July 30.



Member News Continued

Spotlight Artist for June

Seth Rolland

Northwest Woodworkers Gallery member since 2011

Raised by architects, Rolland grew up influenced by Eames, Aalto, and other Danish furniture designers and learned, early on, that form follows function. Seth has been making furniture for over 25 years, first in Taos, New Mexico and now in Port Townsend, WA. During that time his work has evolved to be more sculptural, while still retaining all of its function.

Rolland sees his work fitting into three different collections:

The first are organic, curved pieces inspired by the simplicity, beauty and motion of natural forms. These are created using a variety of methods to shape these curves, including carving, steam bending, lamination and vacuum forming.

Another collection explores the range of forms that can be created from a single piece of wood cut part way through and expanded through steam bending; creating furniture with hardly any glue or joinery.

The last collection combines wood with natural stone. In these pieces the wood is literally balanced by the weight of the stone. Often the design switches the usual qualities of the materials - the wood may look sharp and hard, while the organic shape of the stone makes it seem soft and friendly by comparison.



Member News Continued

Rosette Gault has been awarded a Ph.D by the faculty and researchers at National Centre for Glass and Ceramics Art and Design of University of Sunderland in UK. Formal ceremonies for “Innovation in Paperclay Ceramic Arts” occurred in July 2014 in the UK.

The significance of her innovation, initiative, and influence to contemporary paperclay ceramic arts, sculpture design, and concurrent research on the sustainable materials in ceramics was noted.



Her contribution to the field includes 39 publications, including 4 books, a US Patent #5,726,111, and more than 130 exhibitions since 1971. World teaching and exhibiting has inspired advancement in over 40 countries and four continents. Her citations extended to materials sciences, use in museum conservation, filtration and more.

As an artist, Gault’s conceptual influences are rooted in legacy arts, sciences, humanities, music, and studio pottery stirred in with “Situationist” inspired interventions/ public installations, game theory and contemporary hyper-media. Her art addresses the universal question of liberation and freedom to limits of perception, illusion, and reality.

Her most recent major work in Seattle was an installation featuring more than 50 porcelain figures in Nordstrom’s downtown window in 2012. Among places in Seattle, she has taught at Pottery Northwest, Seward Park Art Studio, and Kirkland Art Center. In addition, she has served on the faculty of Oregon College of Art and Craft in Portland in 1993-94. Since the 1980’s, the artist has had studios in Pioneer Square, Fremont, Ballard and Queen Anne. She has received grants/support from Canada’s Banff Centre for the Arts, Denmark, Czech Republic, Hungary, Finland, UK, New Zealand and Australia. The artist was born in New York City.

She has been a member of NWDC since 1988 and looks forward to emerging from transition and centering back to a slower pace.

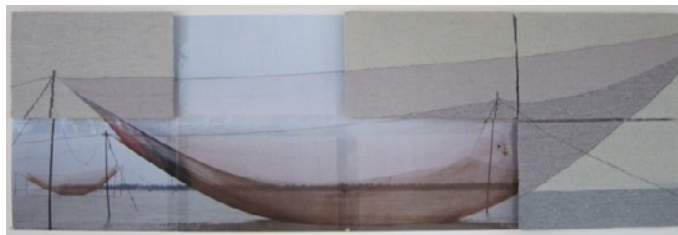
Her teaching challenged the imaginations of artists desiring freedom from fear of cracks and working with alternative methods, such as the non-linear wet-dry approach that has been impetus for the mixed media innovation seen widely today. Some of the technical advantages of her method in ceramics are wet to dry assembly, patching of cracks, and savings of time/labor/fuel/materials.

Her book The New Ceramics: Paperclay Art and Practice (2015--Bloomsbury (UK)/UPenn Press (USA)) surveys diverse worldwide uses of new methods. Gault’s innovative wet to dry methods and process involve a specific set of mixtures of recycled or virgin paper pulp with traditional clays. 89% of the more linear traditional steps in making for ceramic art were changed. She explains her rationale, point by point, in her first studio handbook that appeared in 1993, thanks to encouragement by the late Lamar Harrington (NWDC) and the late Janet Mansfield (President of International Academy of Ceramics, Editor of Ceramic Art and Perception). Her teaching spread and was adopted by prominent artists abroad to the point where it has been described as a “revolution” in the UK by Paul Scott as early as 1996.

Member News Continued

Jan Hopkins, Inge Norgaard and Patricia Resseguie will show work as part of an international exhibition of fiber artists called *Extreme Fibers, Textile Icons and the New Edge*. The show opens August 20 at the Muskegon Museum of Art (Michigan) and runs through November 1, 2015. The exhibition will then travel to the Dennis Museum Center in Traverse City, Michigan, where it can be viewed from December 20, 2015 to March 6, 2016. NWDC is very well-represented with three member artists among just over 50 international artists asked to participate.

Inge Norgaard, *Fourth Net*. Tapestry.
20" x 64".



Jan Hopkins, *Sturgeon Moon*. Sturgeon skin, bull kelp, yellow cedar bark, lunaria seed pods and waxed linen. 13"x16"x7".

Patricia Resseguie, *At Mile Markers 7 and 14*. Silk thread over armature. 9" x 14" x 18".



Member News Continued

Crista Matteson will have a solo show *Finding Humor in the Dark*, of mixed media sculpture and installation in September at the Shift Gallery in Pioneer Square. The show opens for the first Thursday gallery walk on September 3rd, 5:00 - 8:00. She will have a reception on September 19th, 5:00-8:00. The show runs through Sept. 26th.

Come see her demonstrating her techniques in kiln cast glass, cast bronze, ceramic and fiber every Fri. and Sat. in the gallery from 12:30 - 4:30.



Tita Wrapped in Sorrow

Photos: Daniel Fox, Lumina Studio

Crista Matteson
www.cristamatteson.com

Shift Gallery
www.shiftgallery.org

shift
 AN ARTIST-RUN GALLERY

Crista Matteson
Finding Humor in the Dark

New opportunities for NWDC members to promote their work and interact within the group! NWDC members have been busy arranging for some wonderful opportunities for us all. Please take advantage of the two sites listed here.

Our new members only facebook page:

As most of you know, NWDC currently has a business page on Facebook. This is curated and administered by Julie Conway and CJ Hurley. The Board has decided to move forward to create an additional Facebook page that is for NWDC members ONLY. The goal of this page is to build community engagement.

Once you have been added to the group, you may post about your upcoming shows, you may post about needing a ride to a meeting or ask a question about a technique or post a tip....whatever you feel is relevant and appropriate. As with all Facebook groups, please be polite.

Nia Michaels and Barbara De Pirro are currently the admins, but another person or two would also be helpful.

The new page is located here:

<https://www.facebook.com/groups/NWDCMembers/>

Click on over and request to be added!

New website under construction!

New opportunity to update your images!

Perhaps you've previewed NWdesignercraftsmen.org, when you applied for the South Lake Union exhibit. With this new website, NWDC gets a style up-date and each member gets the opportunity of a "personal page." Check out the examples on "Members" at www.nwdesignercraftsmen.org/: click on any of the square images to see more photos and text about a particular artist.

Starting September 15, you may send imagery and text to Eva Funderburgh (eva.funderburgh@gmail.com) for your page. Here's what Eva will need:

- 3-4 pictures of your work, 1500 pixels wide. jpg would be fine, but it doesn't matter too much. Title each one with the piece's title. Any font is okay.
- An artist's statement or brief bio. 125 words or so, +/- 25
- 1 square cropped picture to use as a thumbnail on the front page. Size doesn't matter very much for this one, just at least 300 or so.

Please participate! It's important that "Members" accurately reflects our membership!

NWDC Members: Facebook Business Site

Social Media is key to marketing.

Steps to using the NWDC FB Page

* Please join the NWDC Facebook Page at this link: <https://www.facebook.com/pages/Northwest-Designer-Craftsmen-NWDC/355877767779930>

* Please send this same link to your friends to join as a fan, and to show that you are a part of an illustrious craft guild in the Northwest.

Making a FB Page for your art:

It is best to market your work with a FB Business page. You can start one by going to the HOME page and look at the left side column. You will see a category called PAGES. Click on START A NEW PAGE. From here you can operate your business page. This is truly the best practice as fans do not have to be involved in personal activity.

We will be featuring a focus of media per month on the Facebook page. Along with your regular news of studio events and art exhibitions, please note that we are going to try to drive traffic to our own websites and Facebook pages via the NWDC group page.

In the following months, please do extra posting or “liking” or “sharing” if you are working in a particular medium, there will be a month dedicated to that. Share articles about your medium or links to particular shows with artists making work in that format. Also, a great time to share something special to your practice.

Facebook posts can be more focused.

Please send an email with your info to Julie: info@illuminataglass.com or to Barbara: cj@cjhurley.com

Sept: Fiber Arts/ textile
Oct: Mixed Media
Nov: Sculpture
Dec: Hand Made Gifts

Please send information regarding your artwork, shows, craft events, and other related topics to

CJ Hurley: cj@cjhurley.com

Julie Conway info@illuminataglass.com

How to submit information to the NWDC newsletter

The deadline is the 15th of the month for the next month's newsletter. What is appropriate to submit? Anything in your professional life you would like to share with NWDC members: exhibits, awards, classes, art or studio sales, call for entries, etc. Be sure to include all the information: who, what, when, where & why.

How should text be formatted? Please send your information in the body of an e-mail, **not as a Word document**. The newsletter editor will copy/paste. Please, do NOT send your text in PDF files or jpeg copies of gallery postcards! The text in jpegs and PDFs cannot be copied and pasted.

What about Images? We want images! They need to be in jpeg format, 72 dpi, about 400 pixels on the longest side. Please include name, title, medium, dimensions, etc. Website addresses are great too.

The deadline is the 15th of the month. Send to Denise Snyder at: NWDCeditor@gmail.com

President - Lois Harbaugh - Lois.harbaugh@gmail.com 425-454-0098

Vice President - Joan Hammond - joan@haysys.com 425-391- 5045

Secretary - Patricia Resseguie - fibergal2@me.com

Treasurers - Loren Lukens - loren.d.lukens@gmail.com 206-935-6740

Katherine Holznecht - khartiste@hotmail.com 425-481-7788

Archivist - Sharrey Dore

Education - Lin Holley - lin@palmstogether.net 206-322-7593

Education Support - Steph Mader steph@toltriverstudios.com

Museum Liaison - Layne Goldsmith

Tech Support - Eva Funderburgh - Bellevue Arts Museum lecture and workshop series

Exhibitions - Gale Lurie

Exhibition Support - Joyce Hayes

Hospitality - VACANT

Hospitality For the large parties: VACANT

Membership - Lin McJunkin lin@mcjunkinglass.com 360-941-6742

E-Mail Blasts - Annette Tamm a.tamm@frontier.com 360-299-0323

Newsletter - Denise Snyder NWDCeditor@gmail.com

Publicity - VACANT

Roster / Data Base - Delores Taylor - delores@artglassconcepts.com 425-788-0817

Social Media - CJ Hurley - cj@cjhurley.com and Julie Conway info@illuminataglass.com

Web Liaison - Trudee Hill - trudee@trudeehill.com 310-908-6675

Image Bank - Lanny Bergner - lbergner@wavecable.com 360-229-0514

NWDC VOLUNTEERS

Don't forget to say
"thank you" to these
people who make
NWDC work for you.